



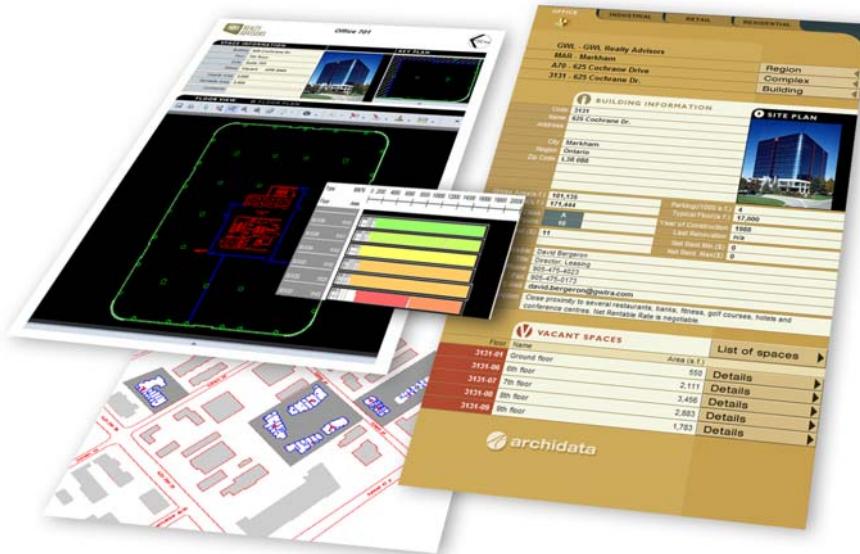
LEASING MANAGEMENT

Enhance the performance of your leasing team

ACCURATE, UP-TO-DATE INFORMATION AT YOUR FINGERTIPS

The Leasing Management Module enables leasing agents and managers to:

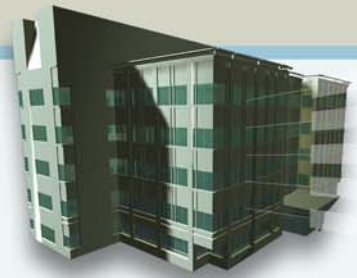
- ▶ Generate color coded stacking and blocking plans of spaces with lease expiry dates and options
- ▶ Generate comprehensive leasing specifications sheets with dynamic floor plans
- ▶ View AutoCAD plans in DWF format
- ▶ Send vacant space plans in PDF format or AutoCAD file
- ▶ Print plans of vacant spaces in PDF or DWF Viewer format
- ▶ Generate automatic BOMA calculations
- ▶ Provide multi-criteria search tool by country, region, city, building, surface area, lease expiry dates and options
- ▶ Allow plan annotations using AutoDESK Design Review



BENEFITS

Users have recognized the following advantages to using the Leasing Management Module:

- ▶ Increases speed and precision when leasing spaces with real time consultation of vacant spaces – close deals faster
- ▶ Increases revenue and reduces liability with accurate area calculations
- ▶ Saves time and reduces dependency on property management to obtain plans
- ▶ Reduces costs of printing and distributing plans
- ▶ Reduces time to complete tenant improvement projects
- ▶ Guarantees accuracy of plans and data by mining the most up-to-date certified plan
- ▶ Interfaces with existing leasing software or ERP



ARCHIDATA MODULES

By combining technology and service, ArchiDATA facilitates your property management with the following tools:

- Virtual Plan Room
- Space Management
- Facilities Management
- Leasing Management
- Portfolio Management
- Project Management
- Scenario Planning Management
- Plan Scanning
- CertiPLAN

ABOUT ARCHIDATA

Founded in 1995, ArchiDATA is a company that specializes in the development of Web-based solutions for plan (paper or CAD), space and building management. ArchiDATA offers a centralized archiving system for plans and documents accessible by all professionals involved in property management and construction.

The ArchiDATA platform and modules are designed to interface with the client's existing systems. It is a global solution for every stage of the property life cycle to increase portfolio performance for all aspects of real estate, including asset, leasing and property management and construction.

To date, more than 140 million square feet are managed using our solution.

