



Smart Property Management

Since 1995, Archidata offers a web solution for real estate managers. The plans archived on the Archidata platform are leveraged by extracting the information needed for space management and making it accessible rapidly and securely.

Reliable information when you need it

The Archidata Solution integrates with existing management systems. It is a global solution that follows the life cycle of a building. Our platform offers a set of tools for three sectors of activities: assets, operations and projects. Many tools are offered to provide reliable information for all real estate activities.

UNITED STATES OF AMERICA

Toll-free: 1-855-870-1770

NEW YORK (Head Office)

641 Lexington Avenue,
14th floor, New York,
NY 10022, USA

T. +212-634-6408

F. +212-634-6409

PLATTSBURGH

48 Spellman Street
Plattsburgh, NY 12901, USA

T. +518-825-0166

CANADA

Toll-free: 1-866-870-1770

MONTREAL (Head Office)

333 Notre-Dame Street East,
108, Montreal, Quebec,
Canada H2Y 3Z2

T. +514-876-1770

F. +514-876-4509

TORONTO

1 Yonge Street, # 1801
Toronto, Ontario, Canada
M5E 1W7

T. +416-214-7829

F. +416-369-0515

archidata.com

LEASING MANAGEMENT

OFFICE | COMMERCIAL | RETAIL | RESIDENTIAL

Ongoing Management of Vacant Spaces

In just one click, the Leasing Management tool creates a global image of vacant spaces for a building or an entire portfolio. It automatically generates and customizes technical specs sheets without the need of a third party. Spec sheets are available online to send to potential clients and are accessible from any mobile device. This tool also produces occupancy simulations with lease expiry date for any given year.

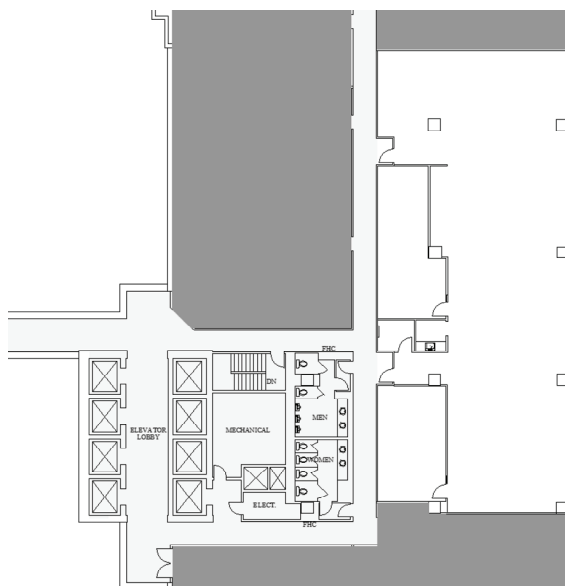


Company Name

SPACE FOR LEASE

101 Alaska Parkway
Suite 200

CONTACT INFORMATION
Arthur Miller | Senior Man, Leasing | (905) 555-2214
amiller@companyname.com



SUITE VIEW



ADDRESS

101 Alaska Parkway
Toronto Canada L3R 9T8

INFORMATION

SUITE: Second floor, Suite 200
RENTABLE AREA: 4,605 sq. ft.

In close proximity to several restaurants, banking, fitness centre within complex, golf courses, hotel and conference centres.



KEY PLAN

▲ Leasing specs sheet

▼ Search engine

LEASING		Archidata Properties Inc.		HOME	
Search Engine		[API] Archidata Properties Inc.		REGION	
Modify Building		[MPL] Millennium Place		COMPLEX	
STACKING		[M01] 68 Wellington Street West - BOMA 96		BUILDING	
Building Information					
Building Code	M01	Building Name	68 Wellington Street West - BOMA	Address 1	68 Wellington Street
Address 2	West	City	New York	State/Province	Choose province/State...
Zip Code	NY 10007	Country	Canada	Usable Area	734558.80
Rentable Area	417239.14	Parking Ratio	4.0	Typical Floor	23139.0
Building Class	A	Number of Floors	28	Construction Year	1996
Last Renovation	2006	Taxes & Operations	20.40	Net Minimum Rent	25.50
Net Maximum Rent	25.50	Name	Mark Raski	Title	Assistant Leasing
Telephone	(212) 634-6408	Email	optica@archidata.com	Description	
<p>The centre is a newly constructed business center Downtown's Financial District near the new World Trade Center Development with fully furnished office suites, equipped conference space, reception and IT support on a high floor with great views in a 24/7 doorman Class A office building centrally located with excellent access to the PATH Train and most subway lines with express service to Penn Station, Grand Central Station and the Port Authority Bus Terminal and walking distance to the NY Stock Exchange and the court houses at Foley Square.</p>					
<p>Page: 1 of 1 Record: 1-3 of 3</p>					
No	Floor Code	Floor Name	Rentable Area	Units	Floor Plan
1.	<input type="checkbox"/> M01-11	11th Floor	1,041	1	Floor Plan
2.	<input type="checkbox"/> M01-12	12th Floor	3,837	1	Floor Plan
3.	<input type="checkbox"/> M01-16	16th Floor	9,865	2	Floor Plan

BENEFITS

- Generates automatically spec sheets with corresponding plan
- Saves time in tenant improvements
- Allows fast searches using criteria such as region, city, building, space, expiry date and leasing option
- Reduces lag time for leasing vacant spaces
- Lowers the risk of square footage misvaluation for leasing

